



THE INJIDUP

The Injidup is designed to take full advantage of select lots with views of the parkway. This clever rear loaded design features a dining area, kitchen and alfresco that take full advantage of the stunning views.

This beautiful home includes two separate bedrooms, an en suite and a main bedroom with a walk in robe.

Margaret River Homes

Our small team of local builders and architects have designed the stunning homes that are perfectly suited for the Margaret River lifestyle.

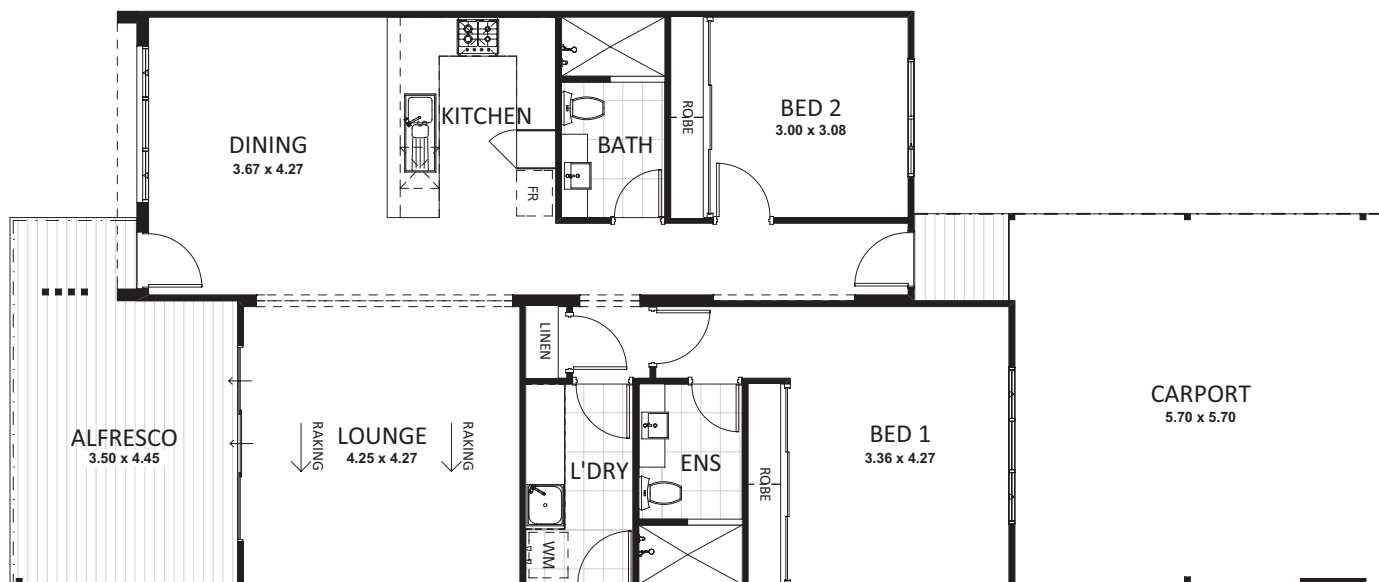
Come and discover exceptional building quality, from the spacious layouts to the premium fittings that come as standard in all our homes. You'll see that this is indeed a special village.



MARGARET RIVER
LIFESTYLE VILLAGE

For over 55's

margaretriverlifestylevillage.com.au



FEATURES

STANDARD INTERNAL

- Reverse cycle air-conditioning
- Insulated roof and external walls
- Essastone bench tops throughout
- Soft close drawers throughout
- Tiled splashback in kitchen
- LED downlights throughout the home
- Built in robes to all bedrooms
- Dishwasher
- Natural gas hotplate and fan forced electric oven
- Stainless steel rangehood
- Gas hot water system
- 2 Telephone & TV points to each home
- Fibre optic cabling provides you with TV / gate camera and intercom and gate opening / free village phone network

- Mixer tapware to sinks & basins in kitchen and bathrooms
- Carpet to all bedrooms
- Quality tiles to all living and wet areas
- Rolla Blinds to all bedrooms.
- Painting throughout including doors, door-frames and skirting boards

STANDARD EXTERNAL

- Landscaped gardens
- All fences supplied
- Lined carport and rear patio
- Clothes line
- Colorbond shed
- Rain water tank

Love the lifestyle?
Now you can live it.

For all enquiries please
 call Adan on 0418 940 450



MARGARET RIVER
 LIFESTYLE VILLAGE

For over 55's

margaretriverlifestylevillage.com.au